



Filter cabinets type KF-A/AF-A/AFK-A with potential equalization for use in connection with ATEX-zones (excl. explosion relief).

For mounting of various types of disposable filters (compact or absolute filters) that e.g. are used for filtering of small quantities of dry dust or as safety filter. Are available as single cabinet with room for 1-2 filter elements and as double cabinet with room for 2-4 filters.

Cabinet type KF-A is designed for compact filters that are clamped in clip frame 592x592mm.

Cabinet type AF-A is designed for absolute filters (HEPA/H13) in metal/ MDF-frame, 610x610mm that are clamped in cabinet mounting flange.

Cabinet type AFK-A is prepared for both compact and absolute filters (HEPA/H13).

For all cabinets the use of antistatic filters is recommended.

All three types are available either with or without welded-on legs and with or without built-in differential pressure manometer.

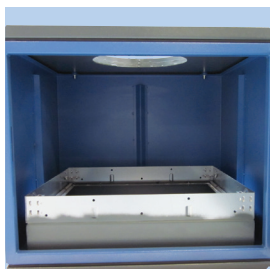
Air volume:	Dependent on selected filter (Max. 8,000m³/h)
Vacuum:	Up to 5,000Pa
Filtration efficiency:	Dependent on selected filter

Description:

- Process air is led into air relief chamber through connection below in filter cabinet. For cabinets without legs the connection is placed in the bottom plate. For cabinets with legs the connection is placed in the left side.
- Air passes vertical through the filter(s) and out into air relief chamber.
- The clean air is extracted out through outlet connection in cabinet top.
- Filters are replaced as needed through hinged front door.

Easy connection and operation:

Cabinets are delivered fully mounted and are suspended/mounted on an even surface. Connecting piping on inlet and outlet connections made as nipple measurements. Cabinets are standard made with potential equalization screw connection. Is a model with built-in differential pressure manometer in front door selected, it is easy to monitor filter soiling regularly.



Mounting/replacement of compact filters in cabinet KF-A

Compact filter with measurement 592x592mm clamped in clip frame. Max. filter height: 400mm



Mounting/replacement of absolute filters in cabinet AF-A

Absolute filter 610x610mm are fastened in universal clamping fixture/mounting flange that fits various filter heights (max. 295mm).



Mounting/replacement of filters in cabinet AFK-A

Compact filter with measurement 592x592mm is clamped in clip frame. Absolute filter 610x610mm is fastened in mounting flange.



Differential pressure drop above filters

For easy monitoring of filter soiling the Minihelic-differential pressure manometer can be built into cabinet front door.

Filter monitoring: Continuous monitoring must be kept with pressure drop above filters for timely replacement of these. For this Minihelic-differential pressure manometer can be mounted in front door of cabinets or electronic filter guard type L1.

Filters suitable for	KF-A	AF-A	AFK-A
Compact filter Synthetic filter material mounted in galv. frame 592x592mm. Filter height: Up to 400mm	Compact filter F9 w/galv. frame, anti-static (w/earthing cable) 592x592x292mm , max. 5000m ³ /h, 19m ² , filter material F9 ¹⁾ (08 291 750 ²⁾) (08 291 752 ³⁾)	-	Compact filter F9 w/galv. frame, anti-static (w/earthing cable) 592x592x292mm , max. 5000m ³ /h, 19m ² , filter material F9 ¹⁾ (08 291 750 ²⁾) (08 291 752 ³⁾)
HEPA-absolute filter High Efficiency Particular Air filter, micro filter (glass fiber) mounted in MDF-/metal frame 610x610mm. Filter height: Up to 295mm. Filtration efficiency, h (%): 99,97<h<99,95 corresponding to filter class H13 according to DS EN1822.	-	Absolute filter HEPA/H13 ⁴⁾ , HS Mikro S, in MDF-frame, antistatic (earth cable) 610x610x292mm , 2100m ³ /h (08 177 025)	Absolute filter HEPA/H13 ⁴⁾ , HS Mikro S, in MDF-frame, antistatic (earth cable) 610x610x292mm , 2100m ³ /h (08 177 025)
	-	Absolute filter HEPA/H13 ⁴⁾ , HS Mikro SFV, in metal frame, antistatic 610x610x295mm , 4000m ³ /h (08 177 925)	Absolute filter HEPA/H13 ⁴⁾ , HS Mikro SFV, in metal frame, antistatic 610x610x295mm , 4000m ³ /h (08 177 925)

¹⁾ Filtration efficiency, E (%): E>95 corresponding to filter class F9 / ePM1 80% according to DS EN779/ISO 16890

²⁾ Max. 2,780m³/h

³⁾ Max. 4,100m³/h

⁴⁾ Filtration efficiency, h (%): 99.97<h<99.95 corresponding to filter classe H13 according to DS EN1822

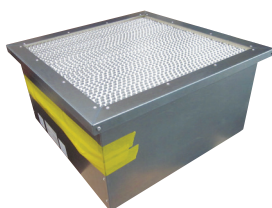


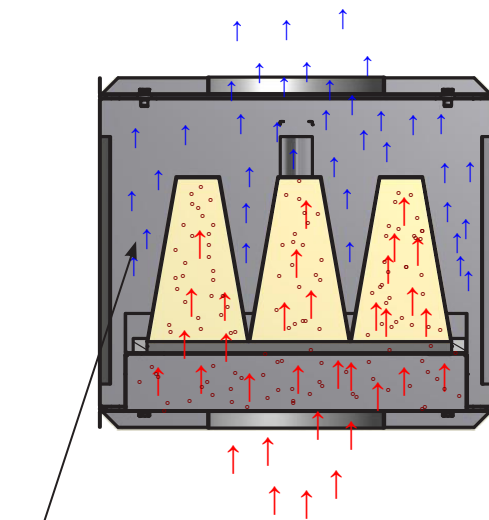
Photo: Compact filter F9 anti-static



Photo: HEPA-filters

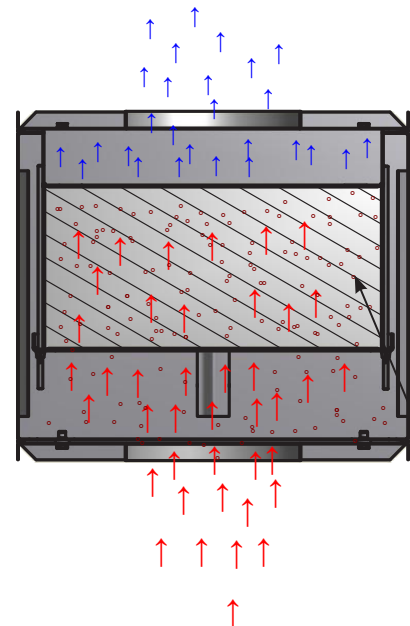
For further information regarding filters we refer to the brochure page for filter materials!

Principle sketch for flow through cabinet type KF-A with inlet in bottom (version without legs):



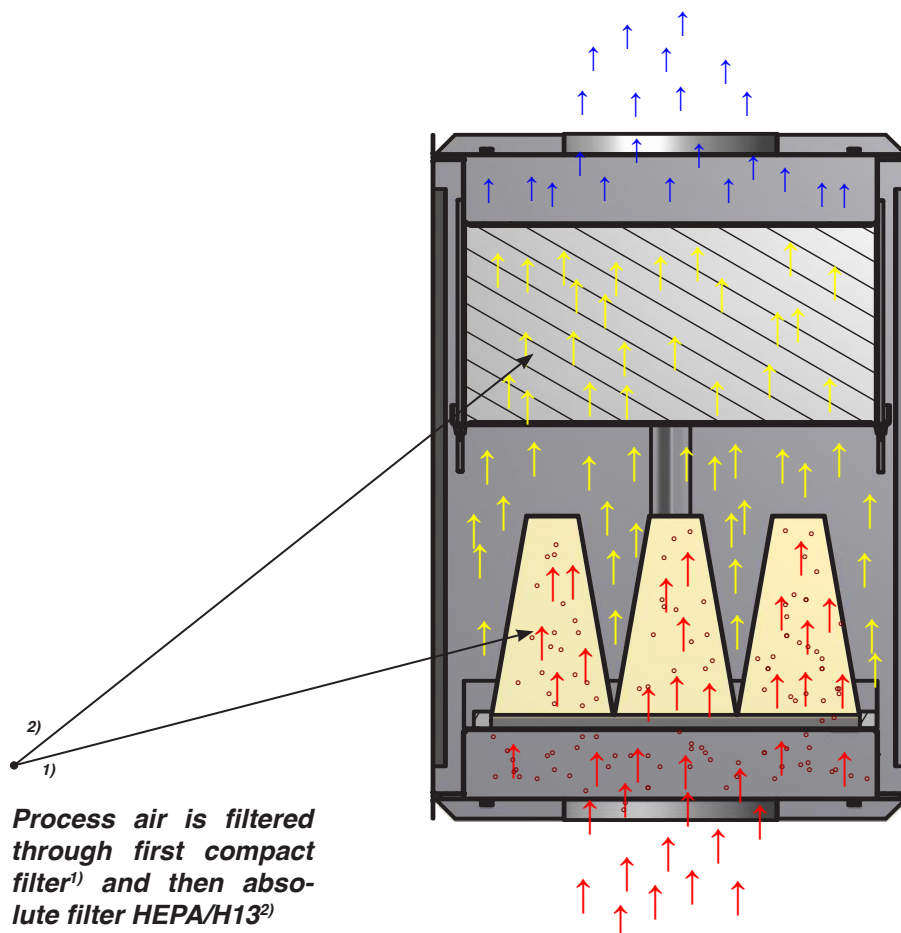
Process air is filtered through compact filter in air relief chamber

Principle sketch for flow through type AF-A with inlet in bottom (version without legs):



Process air is filtered through absolute filter HEPA/H13 in air relief chamber

Principle sketch for flow through cabinet type AFK-A with inlet in bottom (version without legs):



Process air is filtered through first compact filter¹⁾ and then absolute filter HEPA/H13²⁾

CABINETS DISPOSABLE FILTERS Ex II 2DG TYPE KF-A/AF-A/AFK-A

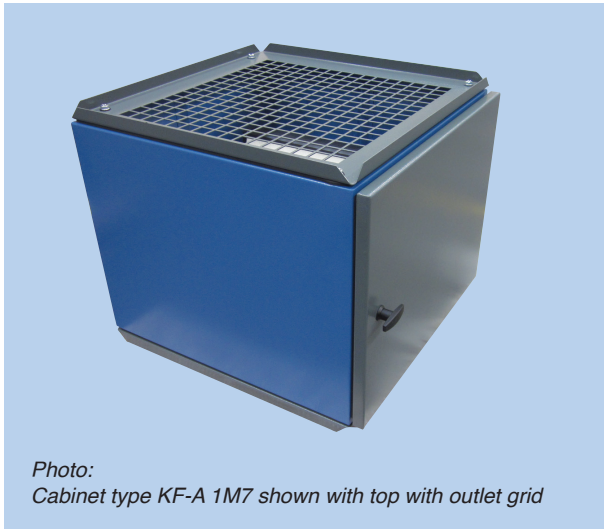
Construction/surface

Filter cabinet is made in 1.5mm black steel plate

Surface powder enamelled RAL 5007/7011 structure

Further is available:

- Version in hot-galvanized, enamelled steel plates for outdoor mounting
- Aluminium spark arrest with labyrinth 592x592x25mm (for cabinet type KF-A or AFK-A)
- Gram FLEX-mountings



*Photo:
Cabinet type KF-A 1M7 shown with top with outlet grid*

Where re-circulation is permitted, the cabinet as single version can be made with diffuse outlet through grid in top.

CABINETS DISPOSABLE FILTERS Ex II 2DG TYPE KF-A/AF-A/AFK-A

Cabinets for disposable filters are available in the sizes as stated in the forms below:

Please, contact us for assistance in selecting the optimal cabinet taking into consideration the requested filter.

Cabinet for compact filter type KF-A (delivered excl. filter):

Type	Order no.	ΔP start/end ¹⁾ [Pa]	Legs	Connection placement	Number possible compact filter(s)	Number Minihelic- differential pres- sure manometer	Weight [kg]
KF-A 1M7	10 453 000	175/600	No	Bottom/top	1	-	44
KF-A 1M7	10 453 100	175/600	Yes	Side/top	1	-	71
KF-A 1M7	10 453 200	175/600	No	Bottom/top	1	1	43
KF-A 1M7	10 453 300	175/600	Yes	Side/top	1	1	75
KF-A 2	10 453 600	175/600	No	Bottom/top	2	-	96

Cabinet for absolute filter type AF-A (delivered excl. filter):

Type	Order no.	ΔP start/end ¹⁾ [Pa]	Legs	Connection placement	Number possible compact filter(s)	Number Minihelic- differential pres- sure manometer	Weight [kg]
AF-A 1M7	10 454 000	250/750	No	Bottom/top	1	-	46
AF-A 1M7	10 454 100	250/750	Yes	Side/top	1	-	77
AF-A 1M7	10 454 200	250/750	No	Bottom/top	1	1	45
AF-A 1M7	10 454 300	250/750	Yes	Side/top	1	1	77
AF-A 2	10 454 600	250/750	No	Bottom/top	2	-	99

Cabinet for compact and absolute filter type AFK-A (delivered excl. filter):

Type	Order no.	ΔP start/end ¹⁾ [Pa]	Legs	Connection placement	Number possible compact filter(s)	Number possible absolute filter(s)	Number Minihelic- differential pres- sure manometer	Weight [kg]
AFK-A 1M7	10 455 000	425/1350	No	Bottom/top	1	1	-	67
AFK-A 1M7	10 455 100	425/1350	Yes	Side/top	1	1	-	98
AFK-A 1M7	10 455 200	425/1350	No	Bottom/top	1	1	2	65
AFK-A 1M7	10 455 300	425/1350	Yes	Side/top	1	1	2	98
AFK-A 2	10 455 600	425/1350	No	Bottom/top	2	2	-	117

¹⁾ Pressure drop stated above filter. The stated values are calculated on the basis of compact and absolute filters from Gram Clean Air A/S.

