



Ventilateur centrifuge à roue fermée utilisé pour l'extraction à la source de l'air pollué ou des processus de fabrication de copeaux. L'air transporté ne doit pas contenir de fumées ou de poussières adhésives ou collantes.

Zone de travail:

Pression maximale: 2,150Pa

Débit d'air maximal: 2.100m³/h

Volume maximal de poussière: 5g/m³, non collant

Taille maximale des particules: 5x5x5mm, non collant

Température : Air extrait (air transporté dans le ventilateur) = max. 60°C

Température ambiante: max. 40°C

N° d'article ventilateur	Efficacité atteinte	Catégorie de mesure	Catégorie d'efficacité	Degré d'efficacité	VSD	Année de production	Page du fabricant	Numéro de modèle/type	Puissance nominale du moteur, débit et pression à l'efficacité optimale			Rpm.	Ratio spécifique	Mise au rebut page	Environnement page	Mesure de montage page
									kW	m³/h	Pa (Ps)					
03 013 000	43,0	D	Total	■	NO	CE-mark	0.B4	VL 550-C2	0,61	750	1235	2867	1,01	0.B4	0.B4	0.B4
03 006 000	50,1	D	Total	■	NO	CE-mark	0.B4	VL 750-C2	0,84	930	1600	2887	1,02	0.B4	0.B4	0.B4
03 008 000	52,0	D	Total	■	NO	CE-mark	0.B4	VL 1100-C2	1,07	1435	1370	2902	1,02	0.B4	0.B4	0.B4
03 009 000	64,0	D	Total	■	NO	CE-mark	0.B4	VL 1150-C2	1,51	1700	1815	2846	1,02	0.B4	0.B4	0.B4
03 008 300	33,3	D	Total	■	NO	CE-mark	0.B4	VL 1100-C4	0,21	639	385	1484	1,00	0.B4	0.B4	0.B4

1RDSSURXYpMHOR330
3HXWUHRWp3EWpDLUBURSUHBLWpBDOUWHVDDPBRPPH3HWLODWHXUBBUDVSRUWBRRUPpPHW33W00

Construction:

HQWLOWHXU0LO0RXH0HUPpBRQWpQV3QELVVRQBQELHU0RXpBW3HFBRWHXUEFRXSOHPHQW0UHFW0

Model: C (Transport of dust)

Wheel: Fan wheel type P-G, closed wheel with backward straight, self-cleaning blades
Static/dynamically balanced according to ISO 14694 (BV3 G 6.3)

Housing: Welded in 2mm steel plate

Fan housing can be mounted with various inlet positions (RD0, RD90, RD180, RD270)

Standard enamelling:

Powder enamelled for indoor mounting (RAL 5007), for outdoor placement galvanizing is also recommended

Motor: IE3 at ≥ 0.75kW / IE1 or IE2 at < 0.75kW

B5 flange motor without bimetallic sensor

3x400V 50Hz (three-phased motors can be frequency regulated)

Fan type VL-C is also available galvanized and spark-protected (copper ring in inlet)

For ATEX fans - see group 10

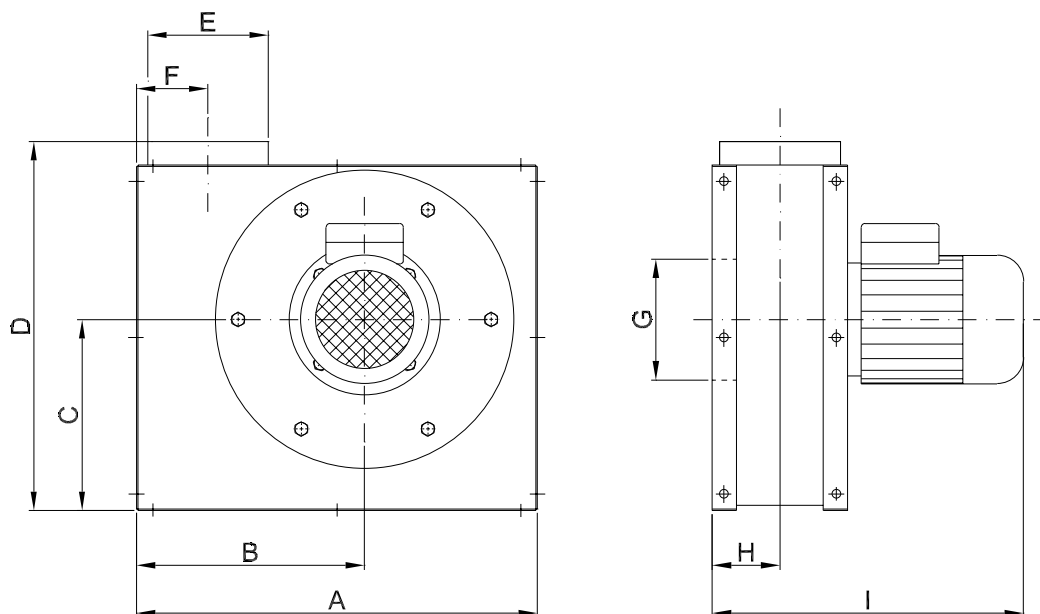
Constructed and tested according to:

- Machine Directive 2006/42/EU
- Electromagnetic Compatibility (EMC) Directive 2004/108/EU
- Low Voltage (LVD) Directive 2014/35/EU
- Harmonized standards: EN 12100, EN 60204-1, EN ISO 13857, ISO 12499
- Further standards: ISO 3746, ISO 5801
- As well as: EU Regulation no. 327/2011 (ERP 2013 and 2015)

Type	Order no.	Volt [V]	[rpm.]	[kW]	Rated current (Amp)	Start current [I_L/I_N]	Weight [kg]
VL 550-C2	03 013 000	3x400	2-pole	0,55	■	■	18,0
VL 750-C2	03 006 000	3x400	2-pole	0,75	■	■	24,0
VL 1100-C2	03 008 000	3x400	2-pole	1,10	■	■	26,0
VL 1150-C2	03 009 000	3x400	2-pole	1,10	■	■	29,0
VL 1100-C4	03 008 300	3x400	4-pole	0,55	■	■	26,0

■ See section "General information" conc. electro motors

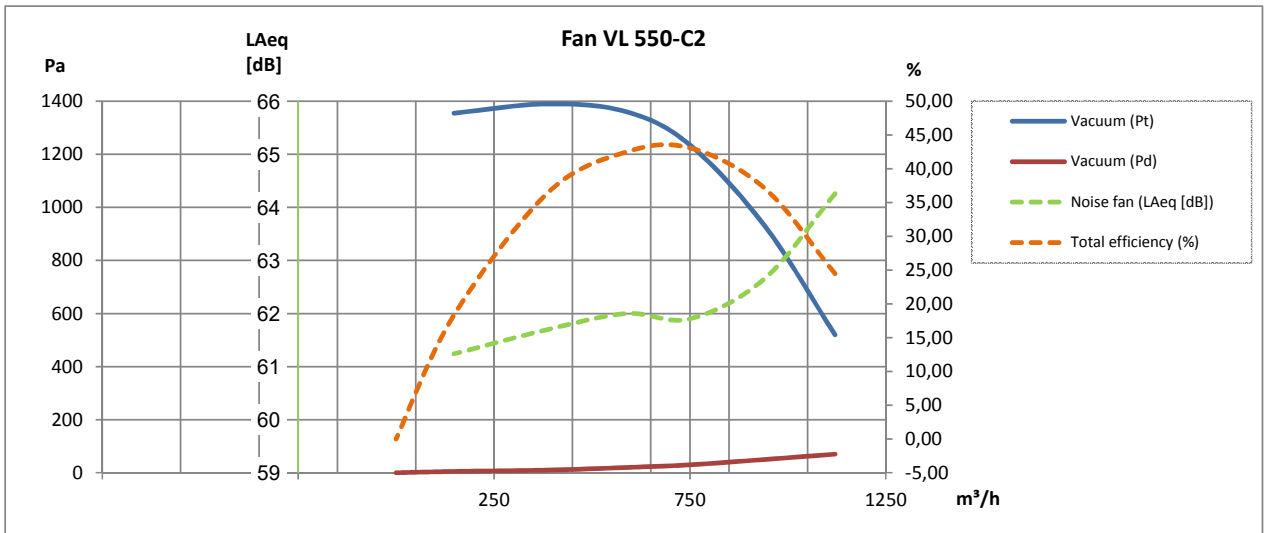
Motor data $\geq 0,75$ kW, 3x400V, according to IE3-motors.



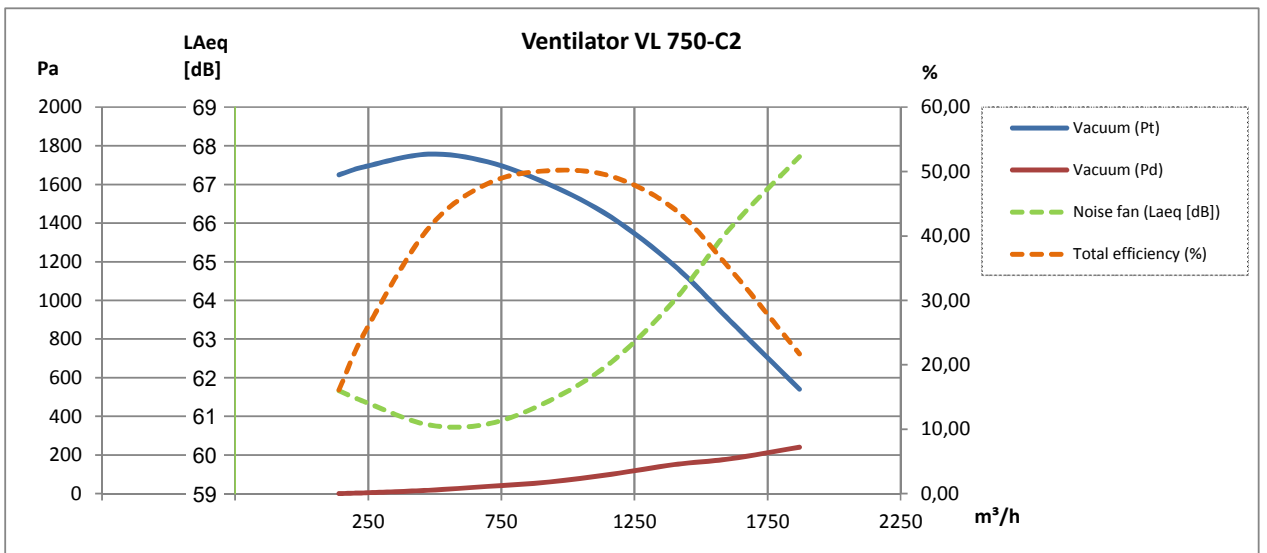
Type	Order no.	A	B	C	D	E	F	G	H	I
VL 550-C2	03 013 000	545	331	236	520	ø160	92	ø160	87	369
VL 750-C2	03 006 000	531	302	253	488	ø160	95	ø160	90	412
VL 1100-C2	03 008 000	531	302	253	488	ø200	104	ø200	107	484
VL 1150-C2	03 009 000	575	333	274	613	ø200	130	ø200	102	438
VL 1100-C4	03 008 300	531	302	253	488	ø200	104	ø200	107	484

Please, note: Connection measurements are nipple measurements

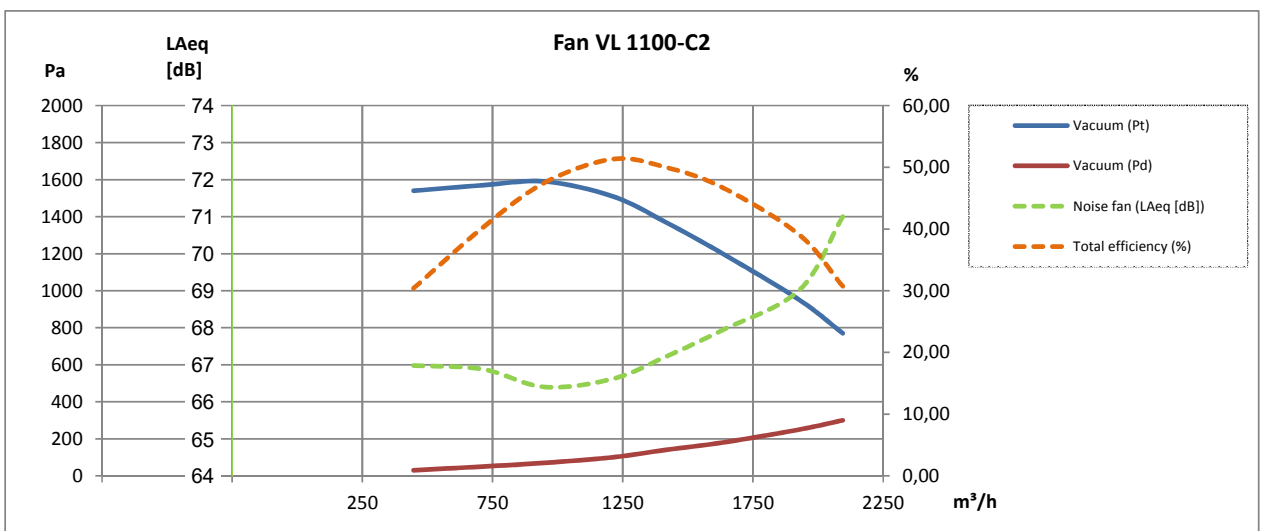
2-pole:



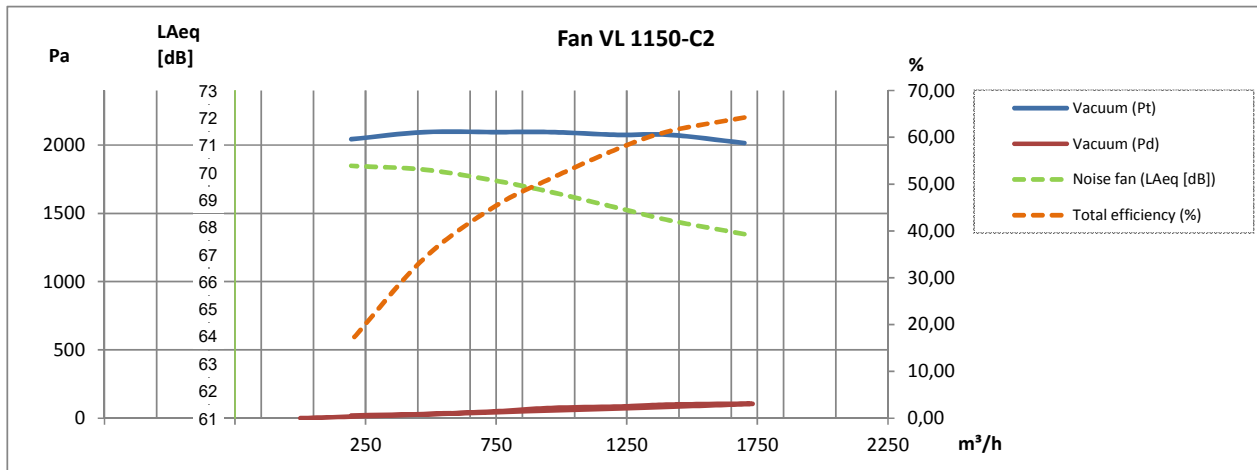
2-pole:



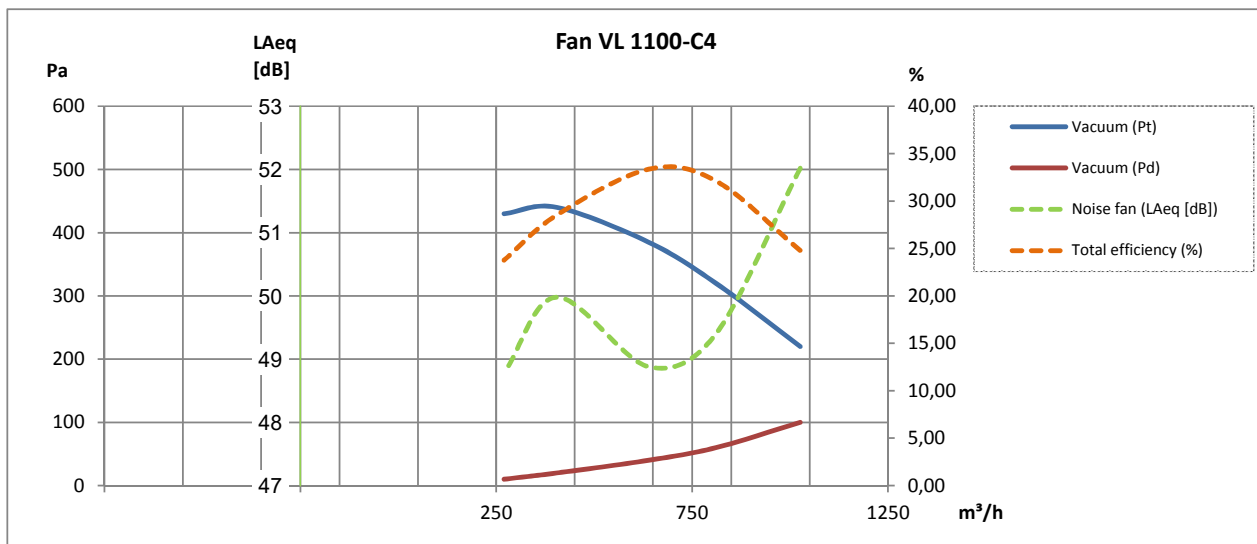
2-pole:



2-pole:



4-pole:



All versions of fan type VT-O is also available i a galvanized version spark protection in copper (Cu) on inlet!

Sound enclosure type VB*:

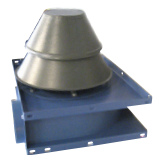
Type (Position RD0)	Order no.
VL 550	03 182 000
VL 750	03 181 000
VL 1100	03 188 000
VL 1150	03 183 000
Additional payment for sound enclosure type VB with side outlet, fan position RD0	03 550 000

* Only for clean air transport



Weather-protected cover for air cooling intake and out for elektro motors:

Type	Order no.
VL 550	03 013 800
VL 750, VL 1100, VL 1150	03 030 800



Fan wheels:

Type	Hub [mm]	Fan type**	[Hz]	Order no.
VL 550	ø14	C2	50	03 034 205
VL 750	ø19	C2/C4	50	03 002 005
VL 1100	ø19	C2/C4	50	03 008 005
VL 1150	ø19	C2/C4	50	03 009 202

**Closed Transport



Photo:
ABB Frequency converter
type ACH 580

Further is available:

- Pressure guard
- Mounting fittings
- Vibrations absorbers
- Safety grid
- FLEX flexible connections
- Explosion-protected construction for application in ATEX zones
- Motor starter Y-D
- Frequency converter