



Centrifugal fan with closed fan wheel that is used at source extraction from air pollutant or chip making work processes. The transported air may not contain adhesive or sticky fumes or dust.

Work area:

Max. pressure: 5,800Pa

Max. air volume: 4,300m³/h

Max. dust volume: 5g/m³, non-sticky

Max. particle size: 5x5x5mm, non-sticky

Temperature: Extracted air (transport air in fan) = max. 60°C

Ambient temperature: max. 40°C

Fan order no.	Achieved efficiency	Measurement category	Efficiency category	Efficiency grade	VSD	Production year	Manufacturer page	Model number/type	Rated motor power input, flow rate and vacuum at optimal efficiency			Rpm.	Specific ratio	Disposal page	Environment page	Mounting measurement page
									kW	m³/h	Pa (Ps)					
03 346 000	51,0	D	Total	■	NO	CE-mark	0.B4	VP 1600/2-C2	3,36	1216	4930	2941	1,05	0.B4	0.B4	0.B4
03 347 000	55,8	D	Total	■	NO	CE-mark	0.B4	VP 1600/3-C2	4,67	1890	4820	2952	1,05	0.B4	0.B4	0.B4
03 349 000	58,5	D	Total	■	NO	CE-mark	0.B4	VP 2600/1-C2	5,37	2035	5410	2938	1,05	0.B4	0.B4	0.B4
03 349 500	64,2	D	Total	■	NO	CE-mark	0.B4	VP 2600/2-C2	5,89	2444	5350	2954	1,05	0.B4	0.B4	0.B4

■ No approved according to EU327/2011 ERP 2015
 May be mounted on clean air side of Gram filter units as transport fan according to EU 327/2011 and EN 13349/2010

Construction:

Radial fan with closed fan wheel mounted in fully welded steel cabinet and with directly coupled motor.

Model: C (Transport of dust)

Wheel: Fan wheel type P-G, closed wheel with backward straight, self-cleaning blades
 Static/dynamically balanced according to ISO 14694 (BV3 G 6.3)

Housing: Welded in 3 or 4mm steel plate

Fan housing can be mounted with various inlet positions (RD0, RD90, RD180, RD270)

Standard enamelling:

Powder enamelled for indoor mounting (RAL 5007), for outdoor placement galvanizing is also recommended

Motor: IE3, B5 flange motor with bimetallic sensor

3x400V 50Hz (three-phased motors can be frequency regulated)

Fan type VP-C is also available galvanized and spark-protected (copper ring in inlet)

For ATEX fans - see group 10

Constructed and tested according to:

- Machine Directive 2006/42/EU
- Electromagnetic Compatibility (EMC) Directive 2004/108/EU
- Low Voltage (LVD) Directive 2014/35/EU
- Harmonized standards: EN 12100, EN 60204-1, EN ISO 13857, ISO 12499
- Further standards: ISO 3746, ISO 5801
- As well as: EU Regulation no. 327/2011 (ERP 2013 and 2015)

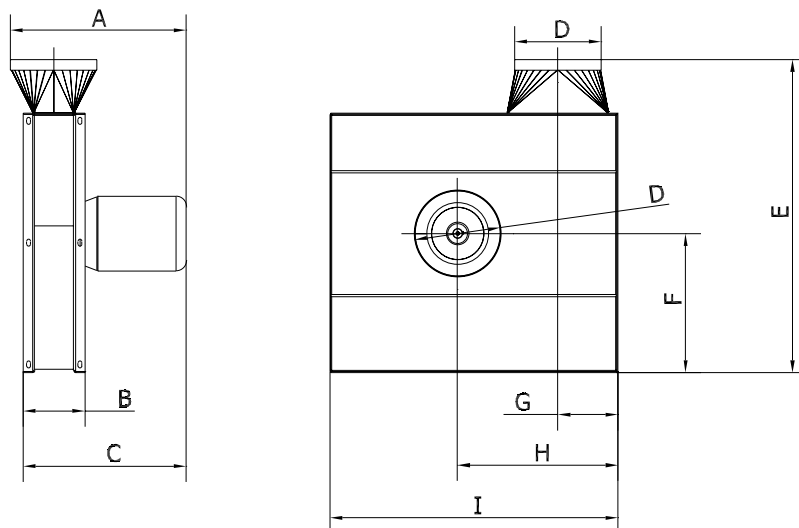


Type	Order no.	Volt [V]	[rpm.]	[kW]	Max. amp.	Start current	Weight [kg]
VP 1600/2-C2*	03 346 000	3x400	2-pole	4,0	■	■	66
VP 1600/3-C2*	03 347 000	3x400	2-pole	5,5	■	■	87
VP 2600/1-C2*	03 349 000	3x400	2-pole	5,5	■	■	98
VP 2600/2-C2*	03 349 500	3x400	2-pole	7,5	■	■	120

* Heavy-starting
Delivered incl. thermo sensor

Motor data $\geq 0,75\text{kW}$, 3x400V, according to IE3-motors.

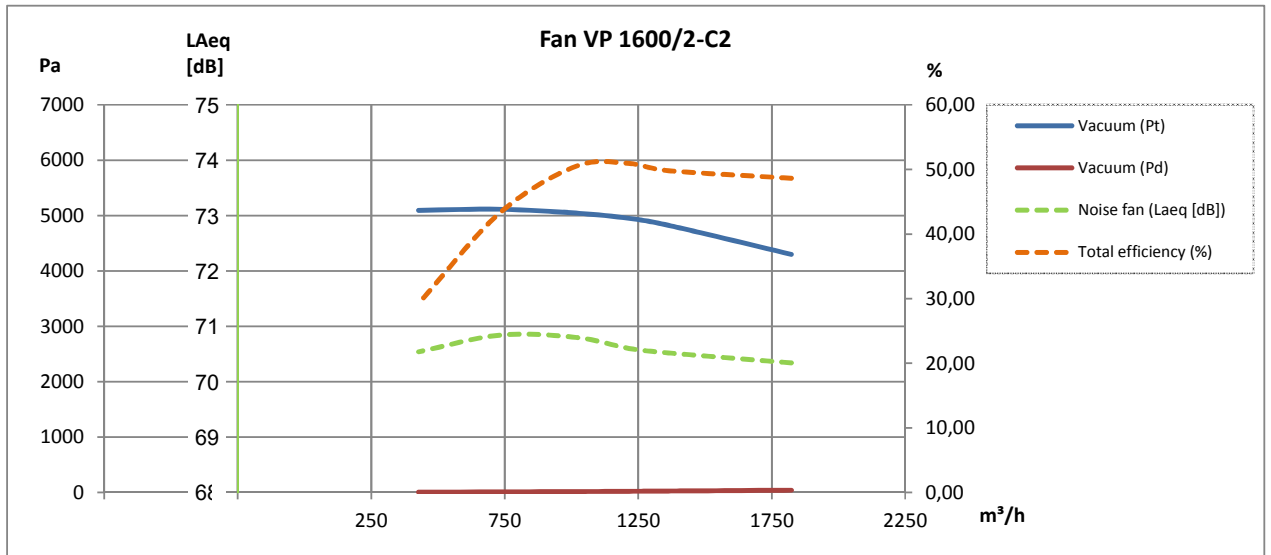
■ See section "General information" regarding electro motors



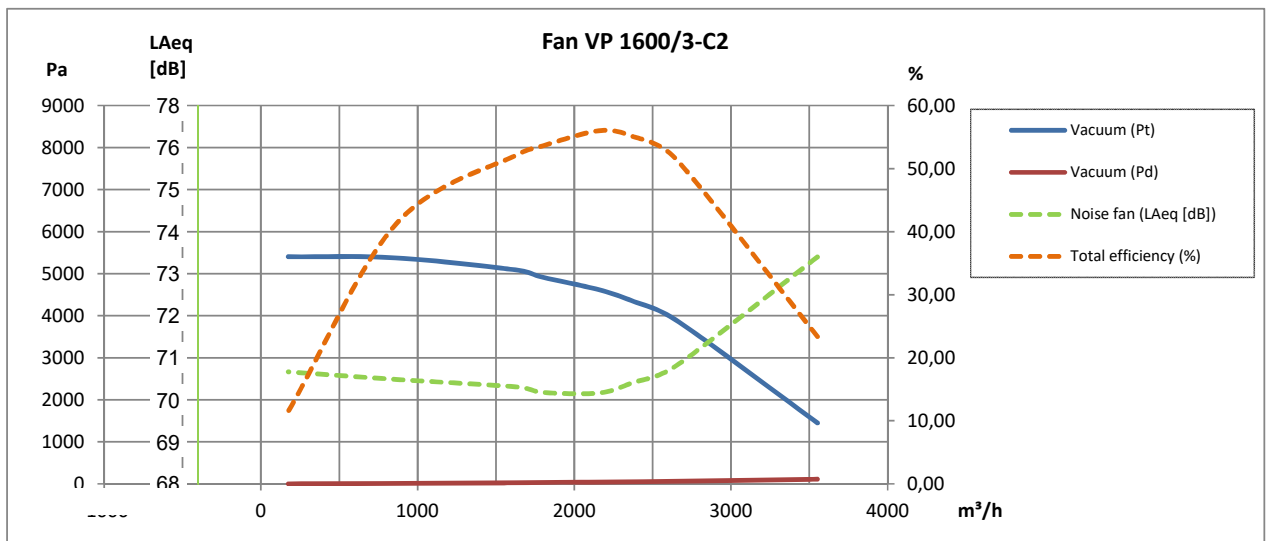
Type	Order no.	A	B	C	D	E	F	G	H	I
VP 1600/2-C2	03 346 000	507	164	464	∅250	914	400	150	462	830
VP 1600/3-C2	03 347 000	515	178	478	∅250	902	400	173	462	830
VP 2600/1-C2	03 349 000	602	206	565	∅250	902	400	173	462	830
VP 2600/2-C2	03 349 500	640	206	603	∅250	902	400	173	462	830

Please, note: Connection measurements are nipple measurements

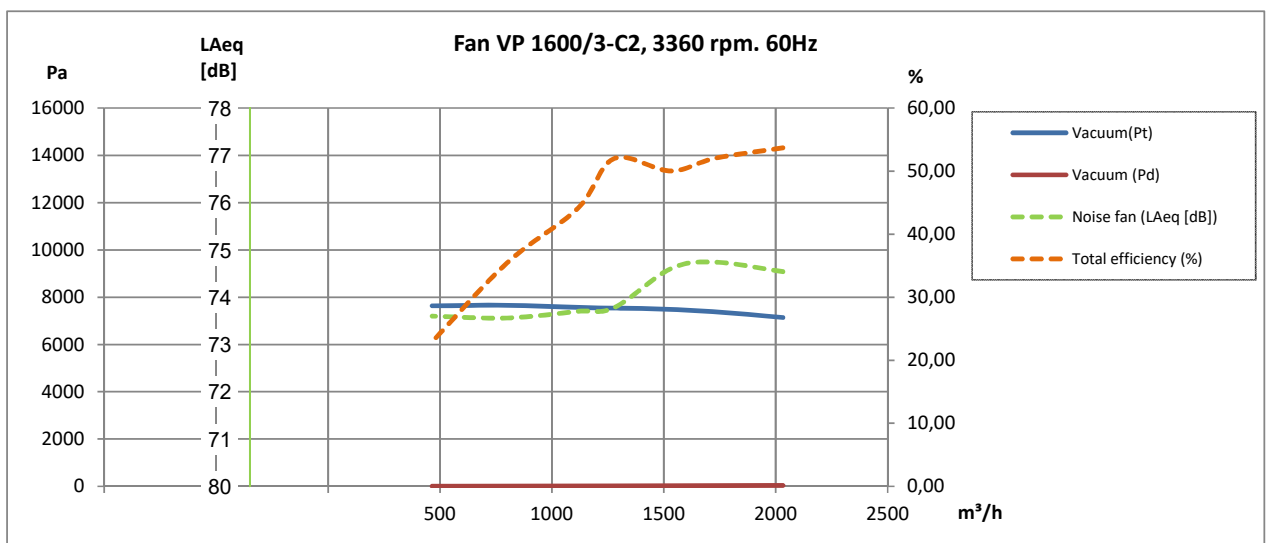
2-pole:



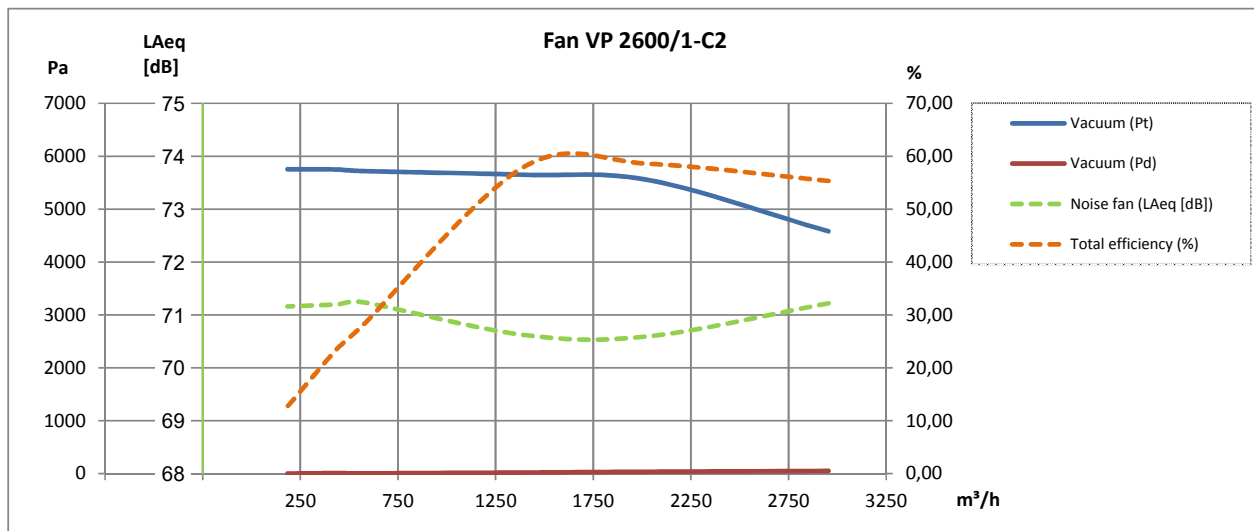
2-pole:



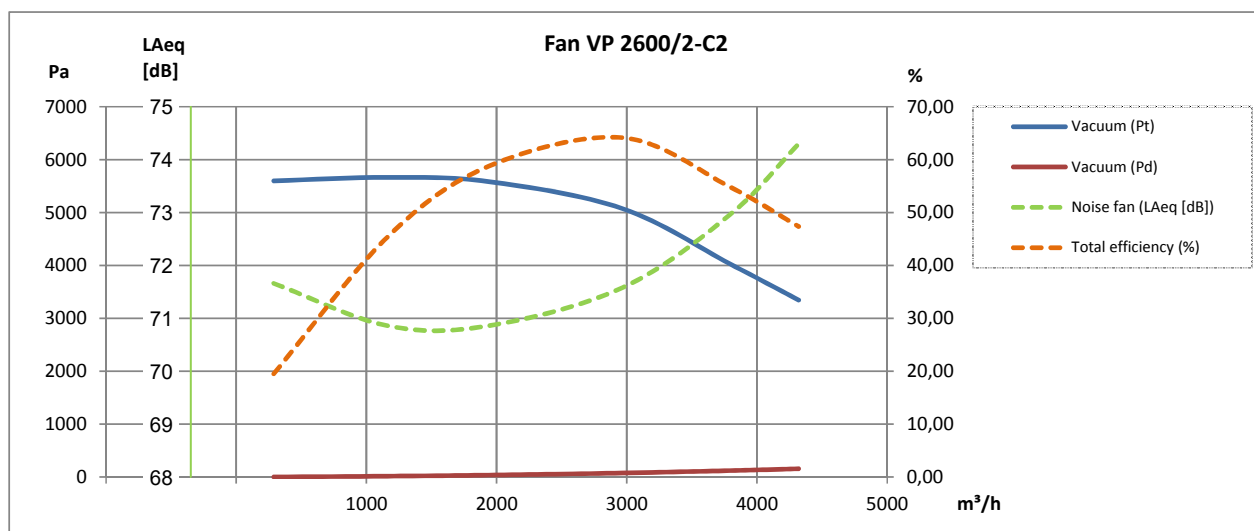
2-pole (60Hz):



2-pole:



2-pole:



Description	Order no.
Additional payment for 60Hz operation (excl. possible special motor)	09 185 010

All versions of fan type VP-C are also available in a galvanized version spark protection in copper (Cu) on inlet!



Sound enclosure type VB*:

Type (Position RD0)	Order no.
VP 1600/2	03 343 500
VP 1600/3	03 343 000
VP 2600/1, VP 2600/2	03 344 000
Additional payment for sound enclosure type VB with side outlet, fan position RD90	03 551 000



* Only for clean air transport

Fan wheels:

Type	Hub [mm]	Fan type**	[Hz]	Order no.
VP 1600/2	ø28	C2	50/60	03 345 005
VP 1600/3	ø38	C2	50/60	03 345 305
VP 2600/1 VP 2600/2	ø38	C2	50	03 349 005
VP 2600/1 VP 2600/2	ø38	C2	60	03 349 065



**Closed Transport



Further is available:

- Pressure guard
- Mounting fittings
- Vibrations absorbers
- Safety grid
- FLEX flexible connections
- Motor starter Y-D
- Frequency converter

Photo:
Danfoss Frequency converter type VLT