



Ventilateur centrifuge à roue fermée utilisé pour l'extraction à la source de l'air pollué ou des processus de fabrication de copeaux. L'air transporté ne doit pas contenir de fumées ou de poussières adhésives ou collantes.

Zone de travail:

Pression maximale: 5,800Pa

Débit d'air maximal: 4,300m³/h

Volume maximal de poussière: 5g/m³, non collant

Taille maximale des particules: 5x5x5mm, non collant

Température : Air extrait (air transporté dans le ventilateur) = max. 60°C

Température ambiante: max. 40°C

Fan order no.	Achieved efficiency	Measurement category	Efficiency category	Efficiency grade	VSD	Production year	Manufacturer page	Model number/type	Rated motor power input, flow rate and vacuum at optimal efficiency			Rpm.	Specific ratio	Disposal page	Environment page	Mounting measurement page
									kW	m³/h	Pa (Ps)					
03 346 000	51,0	D	Total	■	NO	CE-mark	0.B4	VP 1600/2-C2	3,36	1216	4930	2941	1,05	0.B4	0.B4	0.B4
03 347 000	55,8	D	Total	■	NO	CE-mark	0.B4	VP 1600/3-C2	4,67	1890	4820	2952	1,05	0.B4	0.B4	0.B4
03 349 000	58,5	D	Total	■	NO	CE-mark	0.B4	VP 2600/1-C2	5,37	2035	5410	2938	1,05	0.B4	0.B4	0.B4
03 349 500	64,2	D	Total	■	NO	CE-mark	0.B4	VP 2600/2-C2	5,89	2444	5350	2954	1,05	0.B4	0.B4	0.B4

■ No approved according to EU327/2011 ERP 2015
May be mounted on clean air side of Gram filter units as transport fan according to EU 327/2011 and EN 13349/2010

Construction:

Radial fan with closed fan wheel mounted in fully welded steel cabinet and with directly coupled motor.

Model: C (Transport of dust)

Wheel: Fan wheel type P-G, closed wheel with backward straight, self-cleaning blades
Static/dynamically balanced according to ISO 14694 (BV3 G 6.3)

Housing: Welded in 3 or 4mm steel plate

Fan housing can be mounted with various inlet positions (RD0, RD90, RD180, RD270)

Standard enamelling:

Powder enamelled for indoor mounting (RAL 5007), for outdoor placement galvanizing is also recommended

Motor: IE3, B5 flange motor with bimetallic sensor

3x400V 50Hz (three-phased motors can be frequency regulated)

Fan type VP-C is also available galvanized and spark-protected (copper ring in inlet)

For ATEX fans - see group 10

Constructed and tested according to:

- Machine Directive 2006/42/EU
- Electromagnetic Compatibility (EMC) Directive 2004/108/EU
- Low Voltage (LVD) Directive 2014/35/EU
- Harmonized standards: EN 12100, EN 60204-1, EN ISO 13857, ISO 12499
- Further standards: ISO 3746, ISO 5801
- As well as: EU Regulation no. 327/2011 (ERP 2013 and 2015)

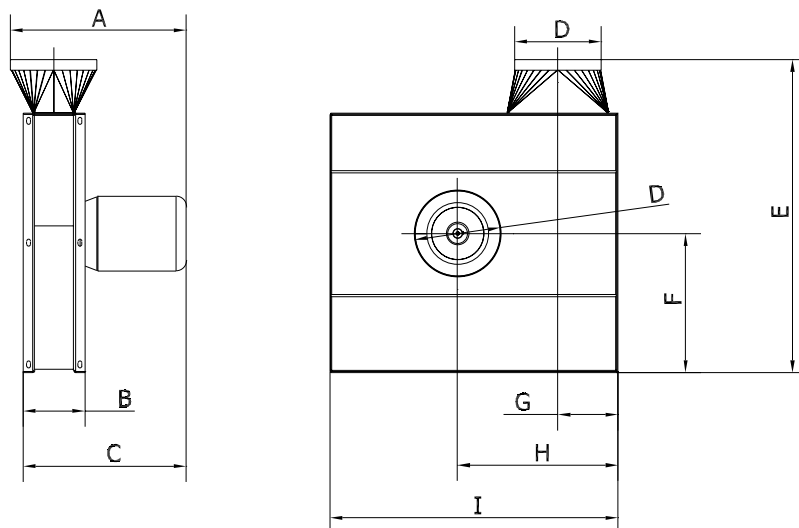


Type	Order no.	Volt [V]	[rpm.]	[kW]	Max. amp.	Start current	Weight [kg]
VP 1600/2-C2*	03 346 000	3x400	2-pole	4,0	■	■	66
VP 1600/3-C2*	03 347 000	3x400	2-pole	5,5	■	■	87
VP 2600/1-C2*	03 349 000	3x400	2-pole	5,5	■	■	98
VP 2600/2-C2*	03 349 500	3x400	2-pole	7,5	■	■	120

* Heavy-starting
Delivered incl. thermo sensor

Motor data $\geq 0,75\text{kW}$, 3x400V, according to IE3-motors.

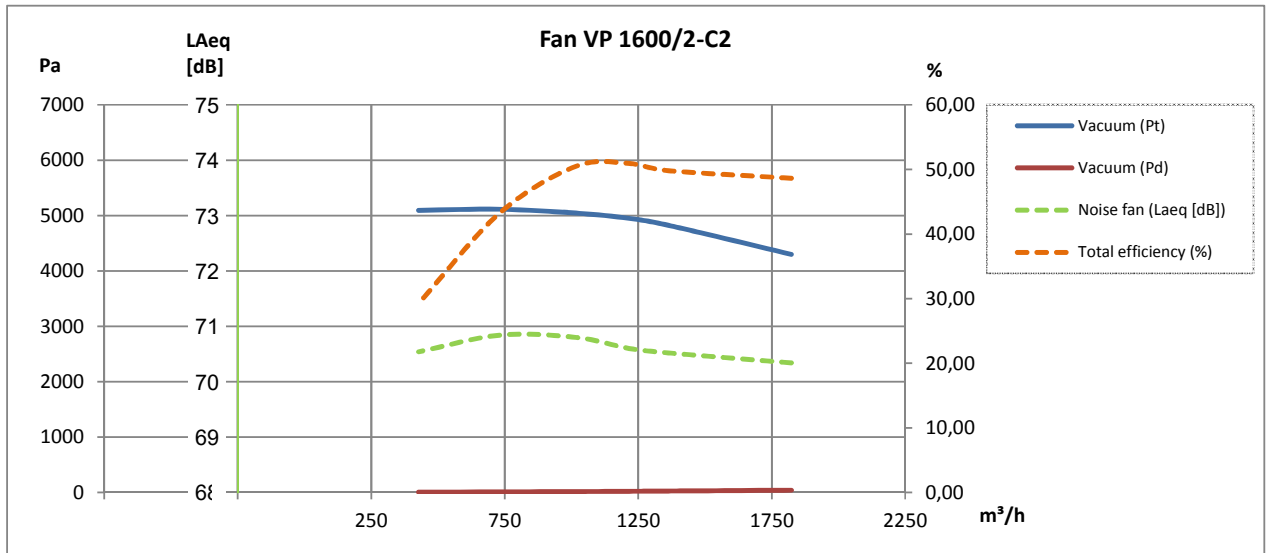
■ See section "General information" regarding electro motors



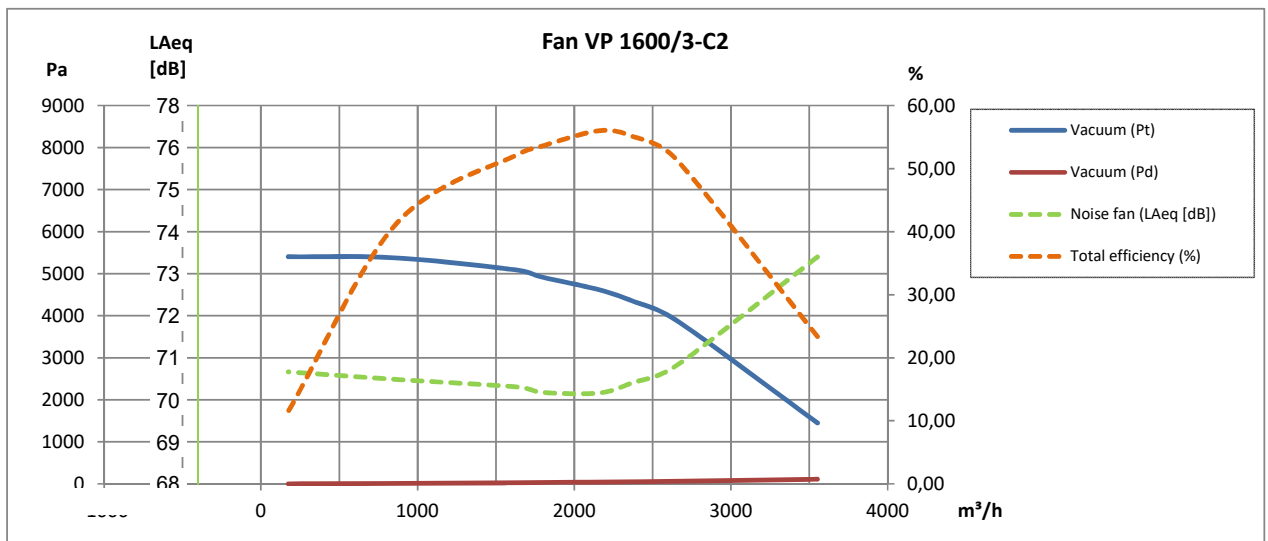
Type	Order no.	A	B	C	D	E	F	G	H	I
VP 1600/2-C2	03 346 000	507	164	464	∅250	914	400	150	462	830
VP 1600/3-C2	03 347 000	515	178	478	∅250	902	400	173	462	830
VP 2600/1-C2	03 349 000	602	206	565	∅250	902	400	173	462	830
VP 2600/2-C2	03 349 500	640	206	603	∅250	902	400	173	462	830

Please, note: Connection measurements are nipple measurements

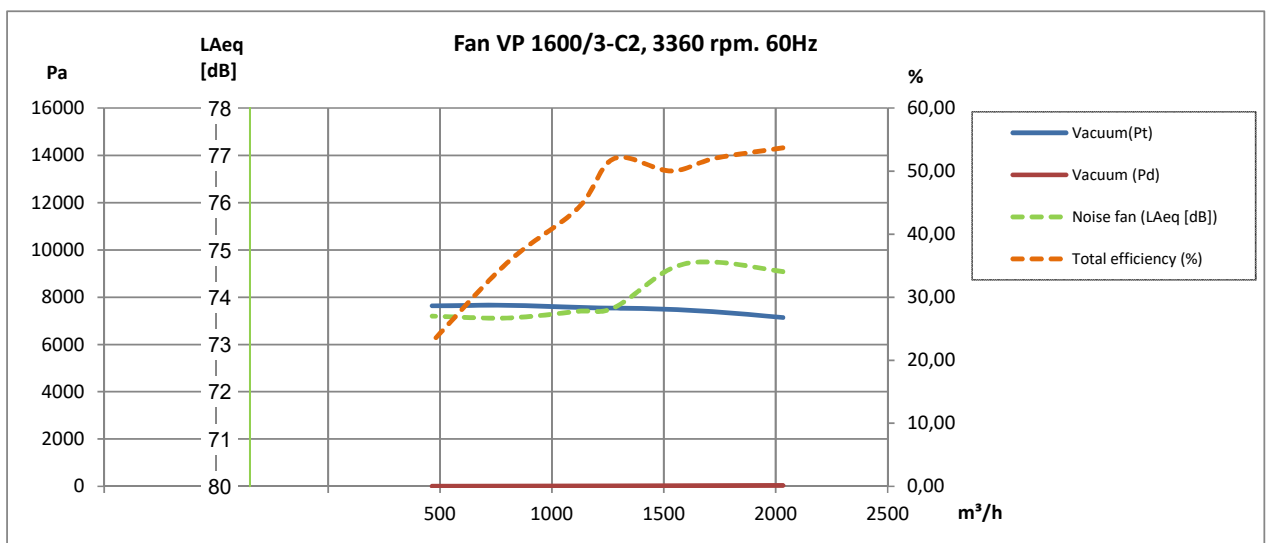
2-pole:



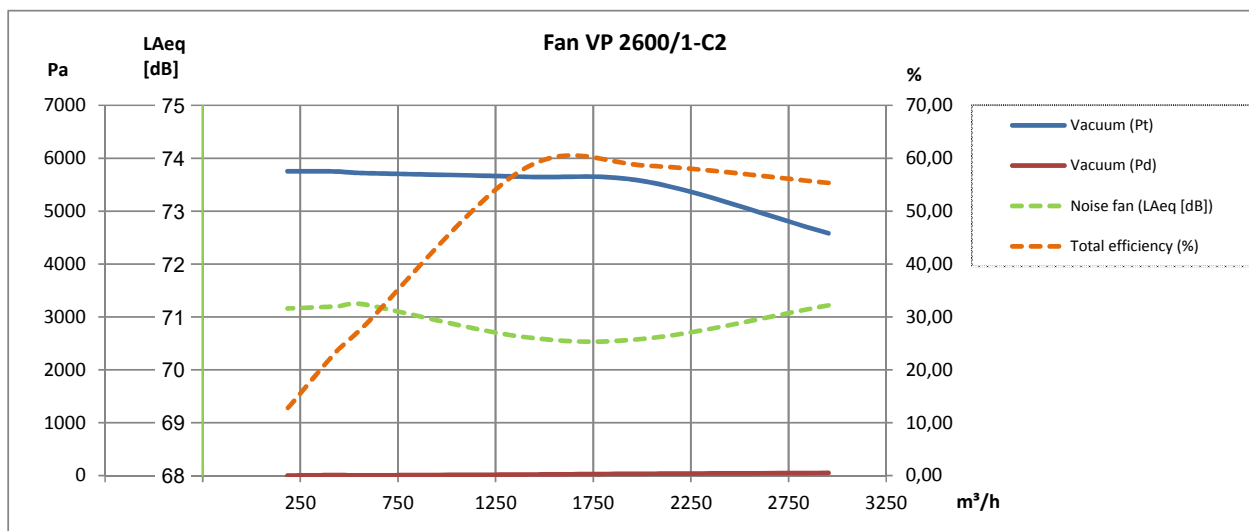
2-pole:



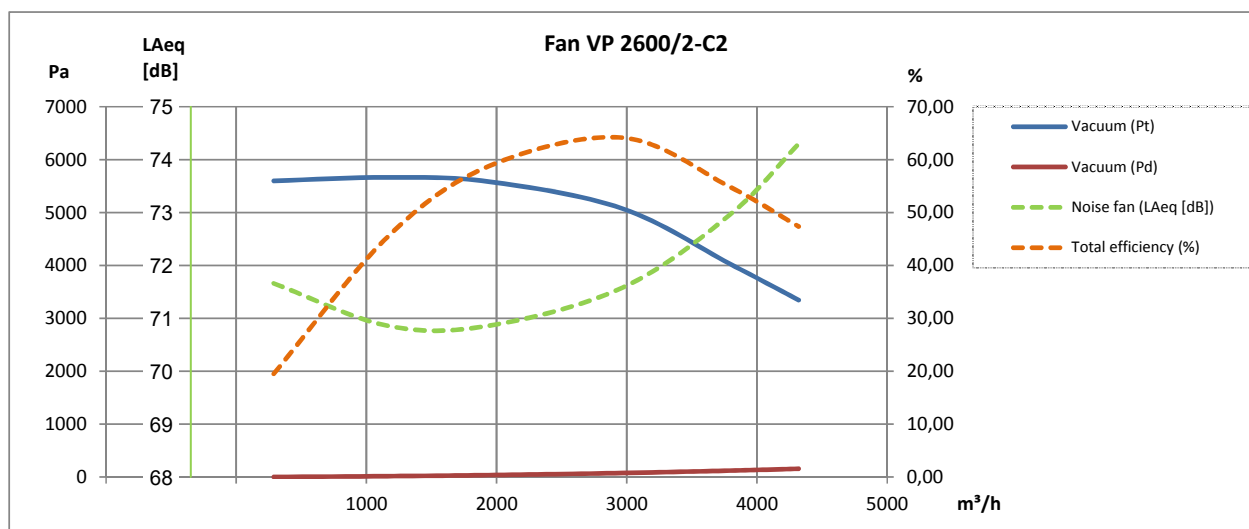
2-pole (60Hz):



2-pole:



2-pole:



Description	Order no.
Additional payment for 60Hz operation (excl. possible special motor)	09 185 010

All versions of fan type VP-C are also available in a galvanized version spark protection in copper (Cu) on inlet!



Sound enclosure type VB*:

Type (Position RD0)	Order no.
VP 1600/2	03 343 500
VP 1600/3	03 343 000
VP 2600/1, VP 2600/2	03 344 000
Additional payment for sound enclosure type VB with side outlet, fan position RD90	03 551 000



* Only for clean air transport

Fan wheels:

Type	Hub [mm]	Fan type**	[Hz]	Order no.
VP 1600/2	ø28	C2	50/60	03 345 005
VP 1600/3	ø38	C2	50/60	03 345 305
VP 2600/1 VP 2600/2	ø38	C2	50	03 349 005
VP 2600/1 VP 2600/2	ø38	C2	60	03 349 065



**Closed Transport



Further is available:

- Pressure guard
- Mounting fittings
- Vibrations absorbers
- Safety grid
- FLEX flexible connections
- Motor starter Y-D
- Frequency converter

Photo:
ABB Frequency converter
Type ACH 580